

AN ISO 9001:2015 CERTIFIED COMPANY

cerface  
*Fabula*



DECORATIVE FUSION OF  
1200x600mm, 300x300mm, 150x75mm

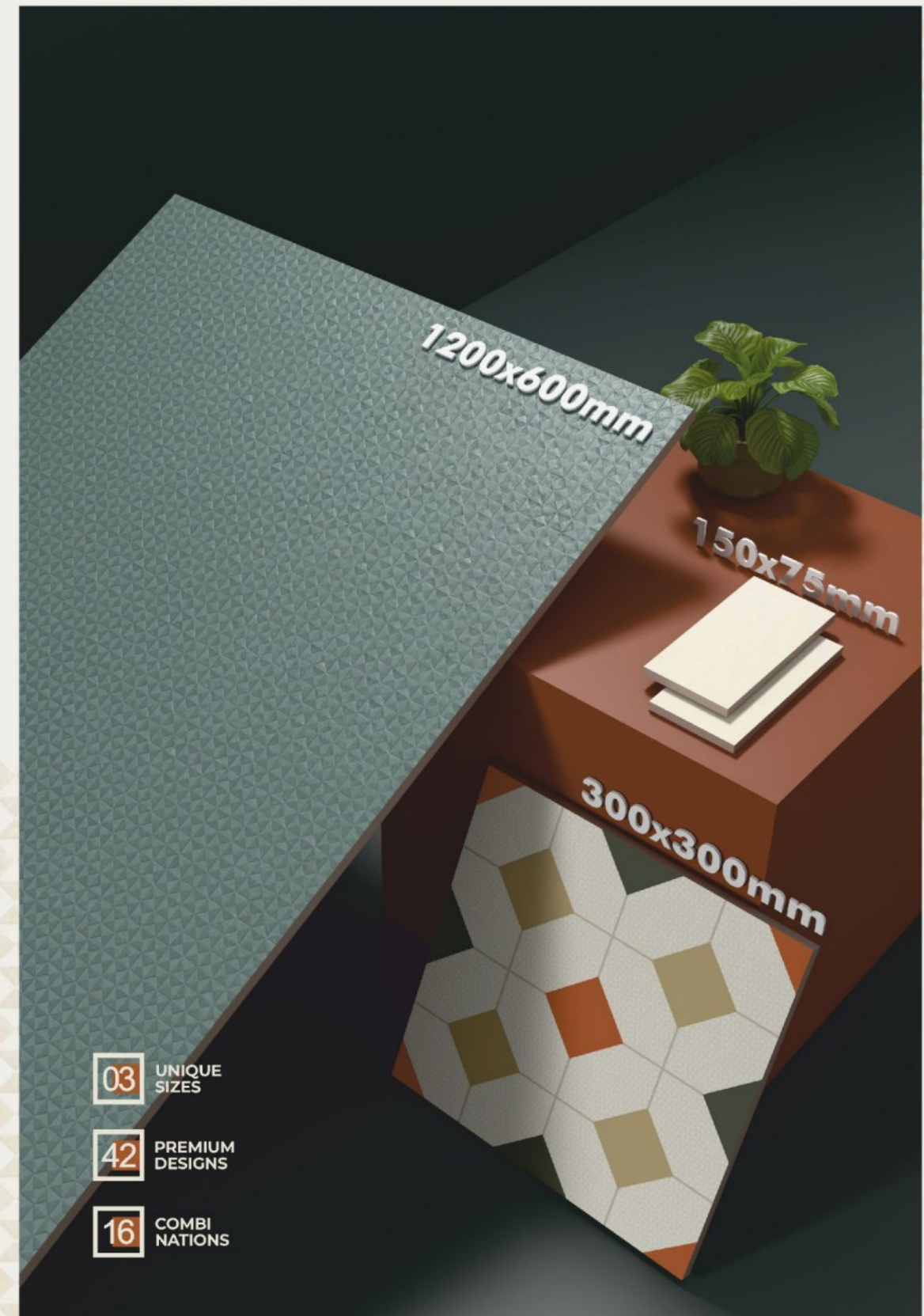
CERAM FASH STUD C<sup>®</sup> ON O

MAKE SPACES **SPEAK.**

cerface  
Fabula

Introducing our exquisite tile collection—where technical craftsmanship meets artistic expression in surface design! Each meticulously crafted piece combines premium materials with innovative manufacturing techniques to deliver unparalleled aesthetic versatility and durability. The collection features proprietary glaze technology that creates stunning depth variations and light-reactive properties, transforming ordinary spaces into extraordinary environments. Our artisans have developed a revolutionary firing process that ensures exceptional wear resistance while maintaining the vibrant color saturation that discerning designers demand.

Beyond mere surface coverings, these tiles represent a material revolution—each pattern tells a story through texture, capturing both contemporary trends and timeless design principles. Perfect for creating statement installations or subtle visual rhythm, the collection empowers designers to elevate residential and commercial projects with surfaces that don't just occupy space—they transform it! Experience the intersection of technical excellence and inspired creativity.



# OUR STORY

*Redefining Spaces with Timeless Elegance & Innovative Tile Design.*

Ceramic Fashion Studio (CFS) was established with its modern state-of-the-art production facility in the year 1994 in the outskirts of Ahmedabad, guided by a visionary mission to redefine the landscape of decorative, value added and allied products for all types of tile segments. Our corporate headquarters is in Ahmedabad, Gujarat, and we have established an extensive nationwide presence through a well-structured network of 500+ dealers, distributors and stockists ensuring comprehensive geographical presence across every corner of India.

Since our inception, we have been diligently engaged in the conceptualising and curation of a diverse product portfolio exceeding 8000+ product designs, each exuding an enchanting and captivating aura.

Our designs have earned recognition for their exceptional ability to instil spaces with distinct character, often characterised by attributes such as warmth, luminosity, luxury, and elegance compatible for varied application areas such as residential areas, cafeterias, restaurants, wellness, hotels, corporate spaces among many others.

The industry's response to our designs has been remarkable, garnering acclaim from esteemed establishments including luxury hotels such as the renowned Taj Group, Novotel, Ramada, etc. Our creations have also found favour among notable personalities in the realm of Bollywood and within the esteemed corridors of corporate giants like Amazon, Intel, Accenture & Google, India as well as the retail outlets of Reliance Azorte, Chaayos, among many others.

Among our cherished accomplishments, specific collections have risen to prominence as epitomes of our artistry, including the most captivating series of Feature Floors, Floor Décor, Hicolor & Cascade.

Over & above we thrive and specialise in customisations from products designs to colours to different finishes, helping architects and interior designers to create their space as per their vision.

Our extensive product categories cater to a wide spectrum of needs, offering solutions for diverse spaces, from flooring, walls, counters, table tops, swimming pool, pathways, exterior cladding as they can be used in uplifting those specific applications underscoring our commitment to adorning life's environments with enduring grace.



application area

*an art for many spaces...*



Kitchen



Bathroom



Living room



Office



Showroom



Restaurants



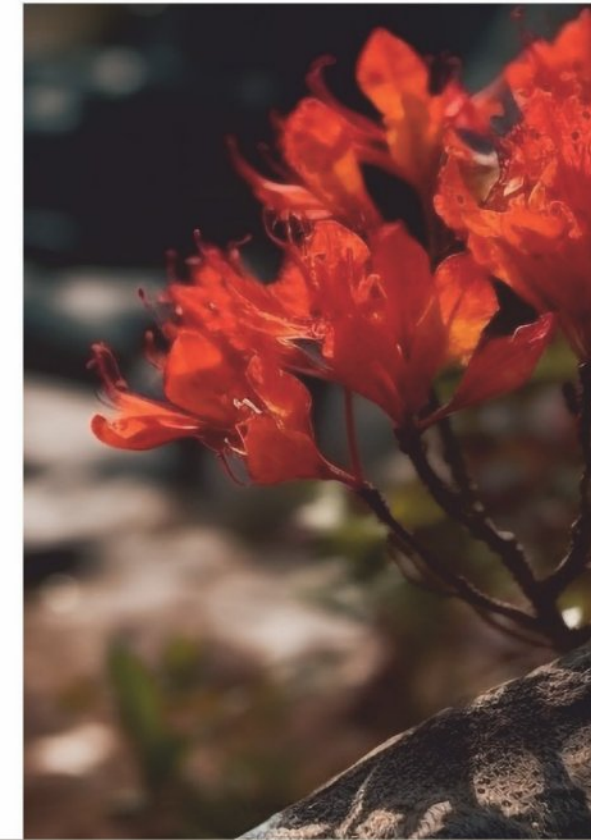
Spa & Saloons



Shops



INSPIRATION from  
**NATURAL  
COLORS**



The imitative nature within us has always been a remarkable asset in our envisioned collection. We have drawn inspiration from the breathtaking beauty of nature, creating an eco-friendly and alluring color palette that captivates the senses. Our mission is to inspire, curate, represent, and enthrall with mesmerizing colors that are both striking and enchanting.

Each combination is a tribute to the elegance of historical and geometrical architecture. The carefully selected tones and hues, along with innovative methods, converge to create the eminent luxury that you will soon discover in this remarkable edition. Prepare to be amazed by the harmonious blend of artistry and elegance that celebrates the essence of beauty!

**cerface**  
*Fabula* DECORATIVE FUSION OF  
1200x600mm, 300x300mm, 150x75mm



cerface  
Fabula



- Fabula Cotton – FB 12060001 (1200x600mm)
- Pacific Pastel – FBA 3030002 (300x300mm)
- Biscoff Beige – FBC 1575002 (150x75mm) ●
- Scallop Pink – FBC 1575004 (150x75mm) ●
- Ocean Whisper – FBC 1575005 (150x75mm) ●

cerface  
Fabula



Conflate modernism with discerning pastels.

CERAMIC  
FASHION  
STUDIO



cerface  
FABIO



- Fabula Cotton – FB 12060001 (1200x600mm)
- Traverse Black – FBA 3030001 (300x300mm)
- Dove White – FBC 1575001 (150x75mm) ●
- Burnt Graphite – FBC 1575018 (150x75mm) ●

cerface  
Fabula



COLOUR PALETTE

Coalesce the stygian with the achromatic, zeal with appeal, and style with sturdiness for curated surfaces.

CERAMIC  
FASHION  
STUDIO



cerface  
Fabula



- Fabula Sand - FB 12060002 (1200x600mm)
- Pacific Mix - FBA 3030004 (300x300mm)
- Chestnut Brown - FBC 1575008 (150x75mm) ●
- Forest Eve - FBC 1575011 (150x75mm) ●
- Brick Brown - FBC 1575014 (150x75mm) ●

cerface  
Fabula

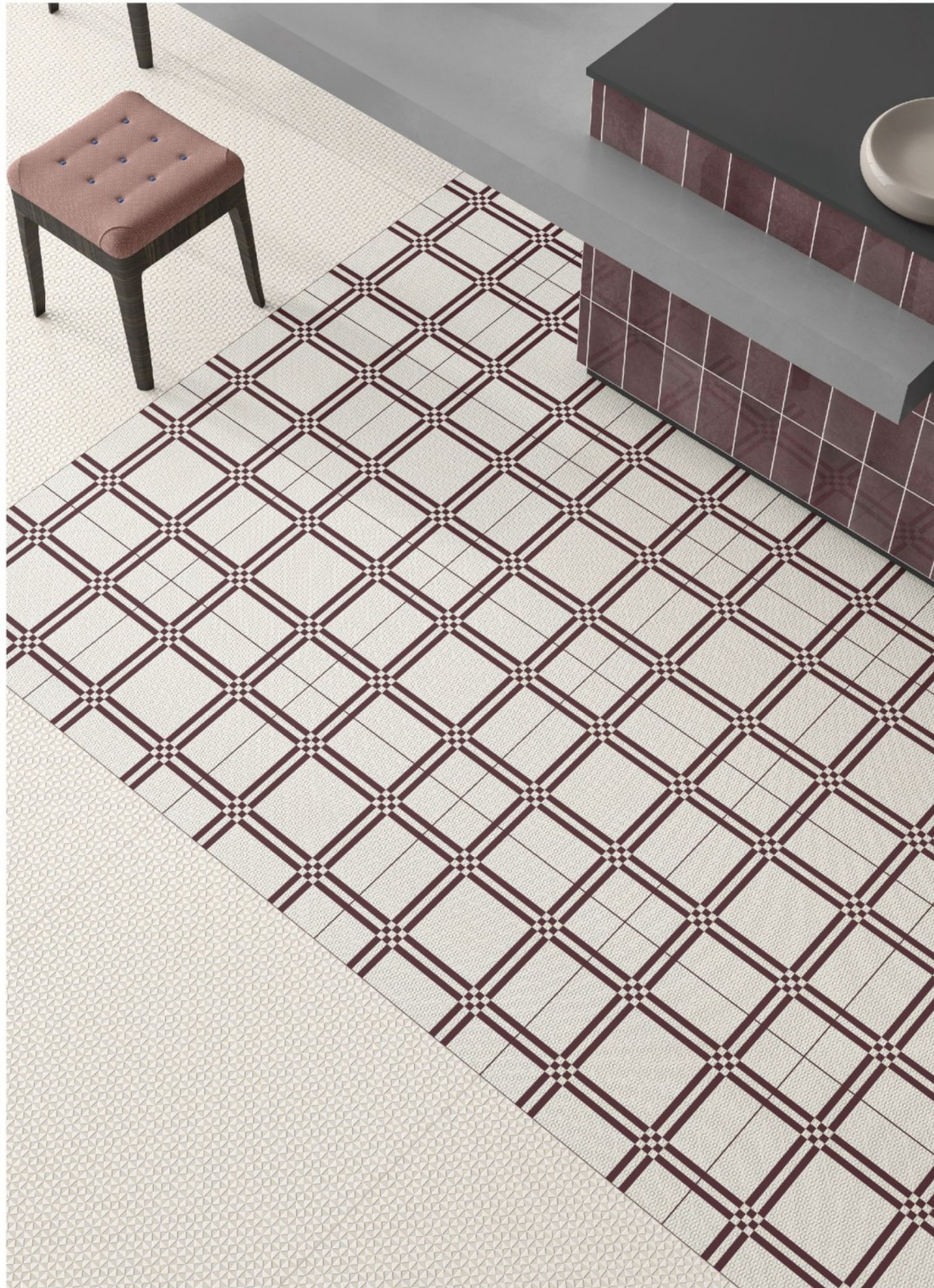


An unflinching use of colour theory  
that imbues a classic vibe.

CERAMIC  
FASHION  
STUDIO



cerface  
Fabula



- Fabula Sand – FB 12060002 (1200x600mm)
- Quad Wine – FBA 3030003 (300x300mm)
- Biscoff Beige – FBC 1575002 (150x75mm) ●
- Indigo Wine – FBC 1575009 (150x75mm) ●

cerface  
Fabula



An inviting tryst of elegance,  
luxury and sophistication.

CERAMIC  
FASHION  
STUDIO

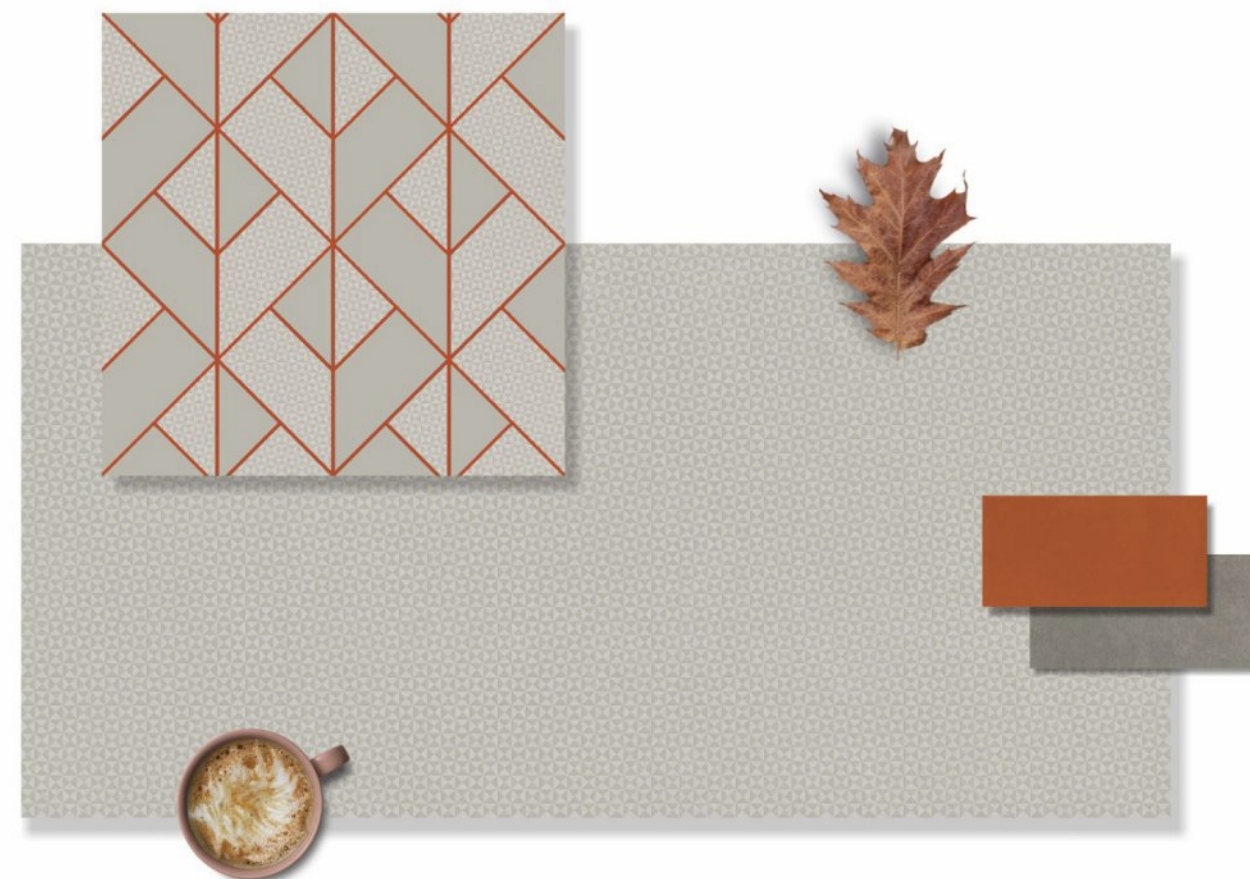


cerface  
Fabula



- Fabula Dune - FB 12060003 (1200x600mm)
- Maze Arancio - FBA 3030005 (300x300mm)
- Nickel Grey - FBC 1575006 (150x75mm) ●
- Brick Brown - FBC 1575014 (150x75mm) ●

cerface  
Fabula



COLOUR PALETTE



A geometric indulgence representing  
a maple leaf in a cold autumn.

CERAMIC  
FASHION  
STUDIO



cerface  
Fabula



Fabula Dune - FB 12060003 (1200x600mm)

Tide Verde - FBA 3030006 (300x300mm)

Nickel Grey - FBC 1575006 (150x75mm) ●

French Fern - FBC 1575013 (150x75mm) ●

cerface  
Fabula



COLOUR PALETTE

A tranquil ambience  
for your haven.

CERAMIC  
FASHION  
STUDIO



cerface  
Fabula



- Fabula Cement - FB 12060004 (1200x600mm)
- Quad Emerald - FBA 3030007 (300x300mm)
- Nickel Grey - FBC 1575006 (150x75mm) ●
- Eternal Emerald - FBC 1575016 (150x75mm) ●

cerface  
Fabula



Combine the sustainability of urbanism with the imperiousness of rare emeralds.

CERAMIC  
FASHION  
STUDIO



cerface  
Fabula



Fabula Cement - FB 12060004 (1200x600mm)  
 Columns Snow - FBA 3030008 (300x300mm)  
 Dove White - FBC 1575001 (150x75mm) ●  
 Nickel Grey - FBC 1575006 (150x75mm) ●

cerface  
 Fabula



A discerning combination that imbues  
 the sense of a pristine white swan floating  
 over a quiet pond.

CERAMIC  
 FASHION  
 STUDIO



cerface  
Fabula



- Fabula Steel - FB 12060005 (1200x600mm)
- Traverse Teal - FBA 3030009 (300x300mm)
- Prussian Teal - FBC 1575017 (150x75mm) ●
- Burnt Graphite - FBC 1575018 (150x75mm) ●

cerface  
Fabula



Designs that are a confluence of passion and elegance, providing a preview into the future of interiors.

CERAMIC  
FASHION  
STUDIO



cerface  
Fabula



Fabula Steel - FB 12060005 (1200x600mm)  
 Tide Nero - FBA 3030010 (300x300mm)  
 Autumn Sky - FBC 1575003 (150x75mm) ●  
 Slate Grey - FBC 1575010 (150x75mm) ●

cerface  
 Fabula



The tides of your intuition and waves  
 of our innovation combine to create a  
 retreat of tranquillity.

CERAMIC  
 FASHION  
 STUDIO



cerface  
Fabula



Fabula Mud - FB 12060006 (1200x600mm)

Aries Brick - FBA 3030011 (300x300mm)

Café Noir - FBC 1575007 (150x75mm) ●

Rich Prune - FBC 1575015 (150x75mm) ●

cerface  
Fabula



Designs that capture the essence of  
an ever evolving and highly elusive modern  
expression.

CERAMIC  
FASHION  
STUDIO



cerface  
Fabula



- Fabula Mud - FB 12060006 (1200x600mm)
- Traverse Wine - FBA 3030012 (300x300mm)
- Café Noir - FBC 1575007 (150x75mm) ●
- Indigo Wine - FBC 1575009 (150x75mm) ●
- French Fern - FBC 1575013 (150x75mm) ●

cerface  
Fabula



Inspired by grapevines, a curation that follows the environment, embraces its surroundings, and makes luxury feel effortless.

CERAMIC  
FASHION  
STUDIO



cerface  
Fabula



- Fabula Fern - FB 12060007 (1200x600mm)
- Traverse Fern - FBA 3030013 (300x300mm)
- Biscoff Beige - FBC 1575002 (150x75mm) ●
- Chestnut Brown - FBC 1575008 (150x75mm) ●
- Forest Eve - FBC 1575011 (150x75mm) ●

cerface  
Fabula



Decors that teleport you for a walk through a serene tropical forest.

CERAMIC  
FASHION  
STUDIO

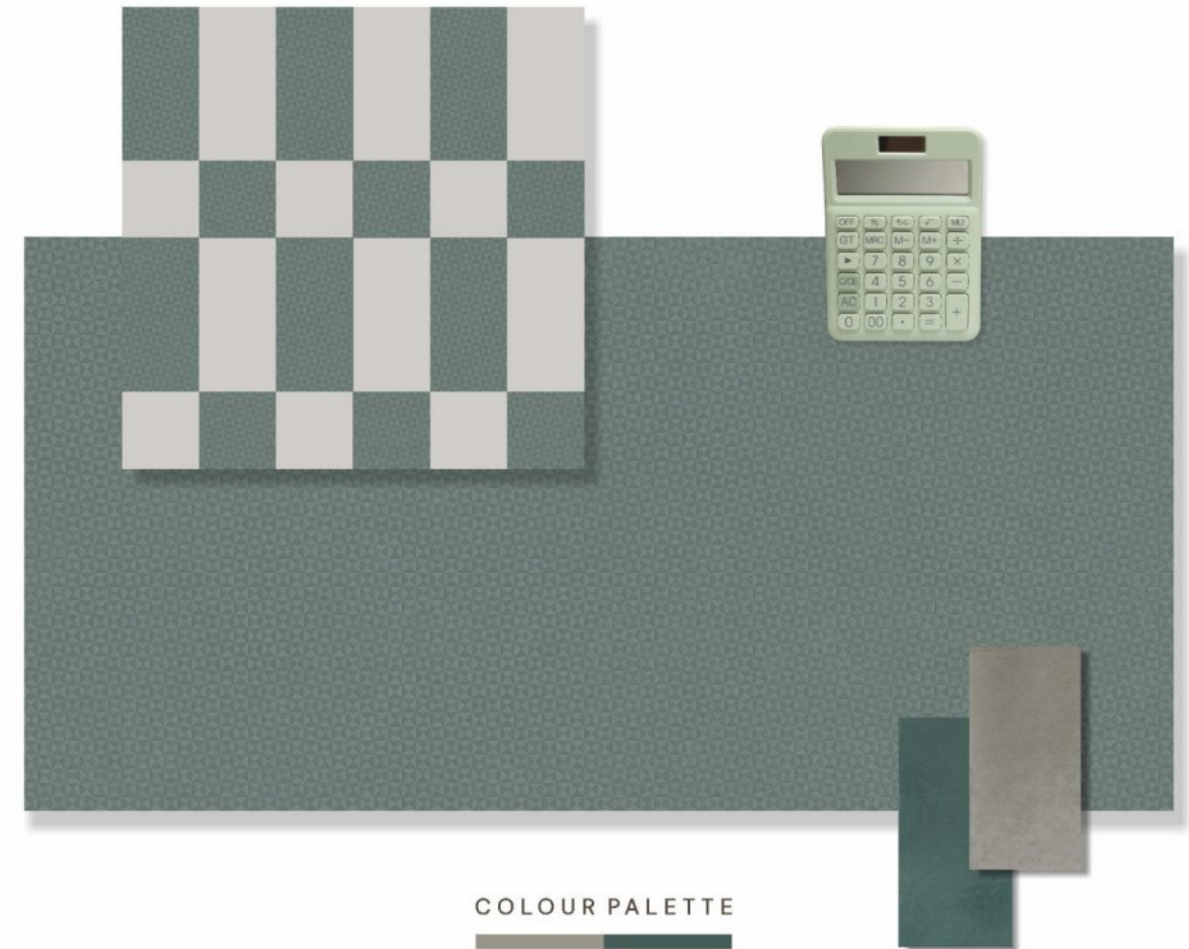


cerface  
Fabula



Fabula Fern - FB 12060007 (1200x600mm)  
 Columns Beige - FBA 3030014 (300x300mm)  
 Nickel Grey - FBC 1575006 (150x75mm) ●  
 French Fern - FBC 1575013 (150x75mm) ●

cerface  
 Fabula



COLOUR PALETTE

A beautifully curated melodic  
 symphony of colours that aspires  
 to bring nature indoors.

CERAMIC  
 FASHION  
 STUDIO

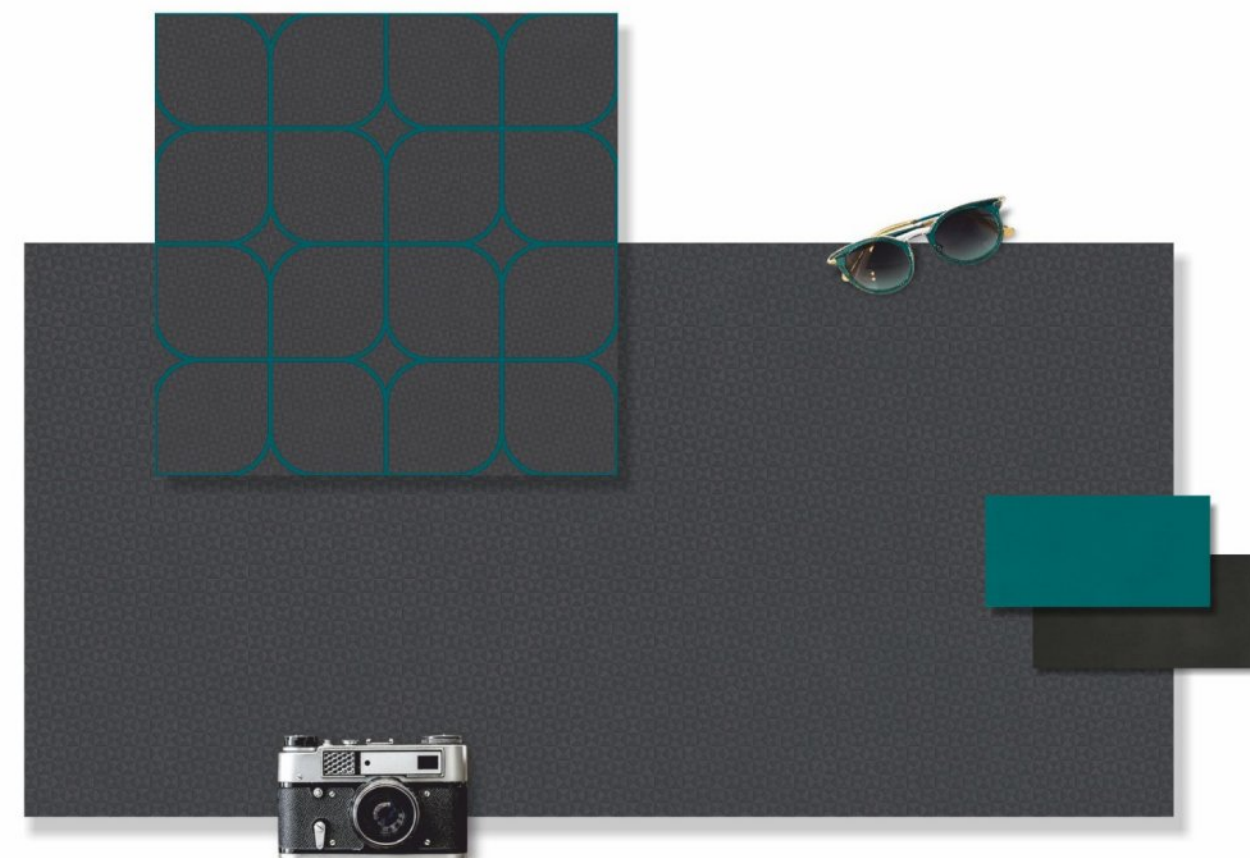


cerface  
Fabula



Fabula Graphite – FB 12060008 (1200x600mm)  
 Aries Black – FBA 3030015 (300x300mm)  
 Prussian Teal – FBC 1575017 (150x75mm) ●  
 Burnt Graphite – FBC 1575018 (150x75mm) ●

cerface  
 Fabula



COLOUR PALETTE

Arcs for every tangent that  
 will design the future.

CERAMIC  
 FASHION  
 STUDIO



cerface  
Fabula



Fabula Graphite - FB 12060008 (1200x600mm)  
 Tread Mono - FBA 3030016 (300x300mm)  
 Dove White - FBC 1575001 (150x75mm) ●  
 Burnt Graphite - FBC 1575018 (150x75mm) ●

cerface  
 Fabula

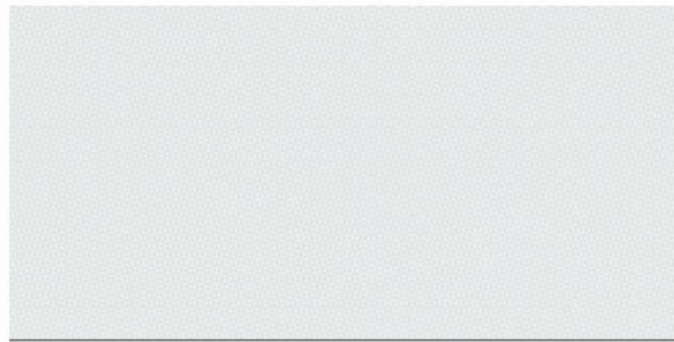


The combination of bold and quaint  
 that induces a much-needed balance  
 into your ambient luxury.

CERAMIC  
 FASHION  
 STUDIO

# 1200x600mm Fabula

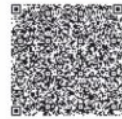
FOR MORE INFORMATION  
CLICK ON QR



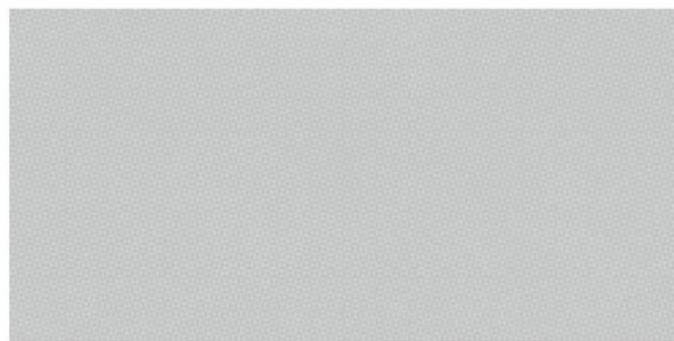
**Fabula Cotton**  
FB 12060001



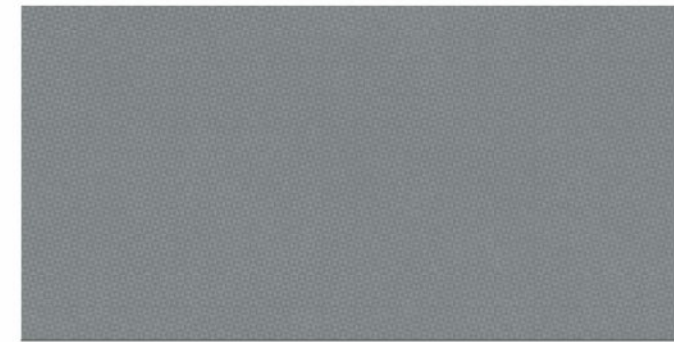
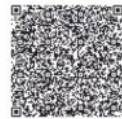
**Fabula Sand**  
FB 12060002



**Fabula Dune**  
FB 12060003



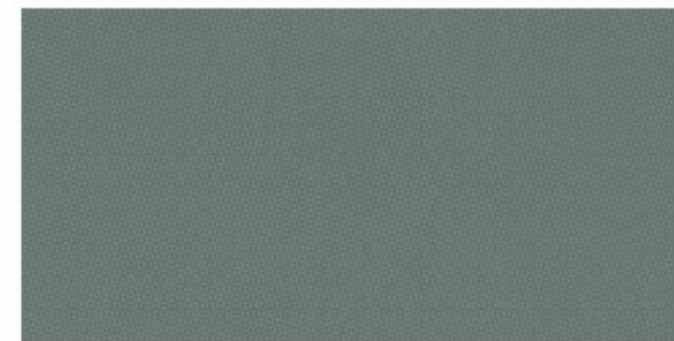
**Fabula Cement**  
FB 12060004



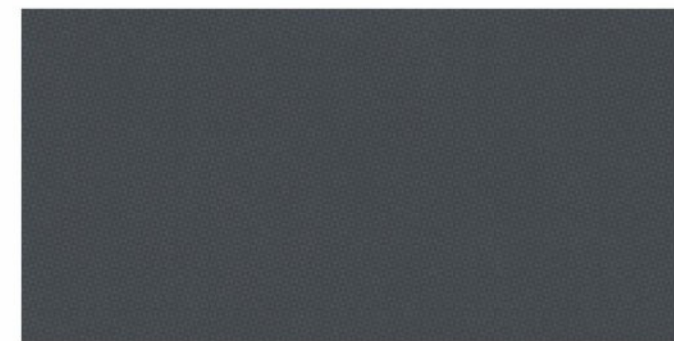
**Fabula Steel**  
FB 12060005



**Fabula Mud**  
FB 12060006



**Fabula Fern**  
FB 12060007

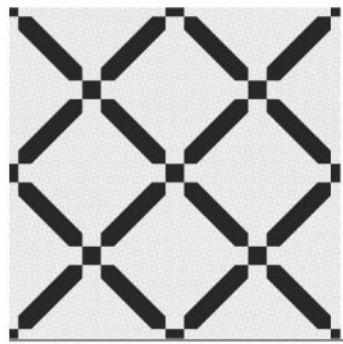


**Fabula Graphite**  
FB 12060008



300x300mm Fabula Art

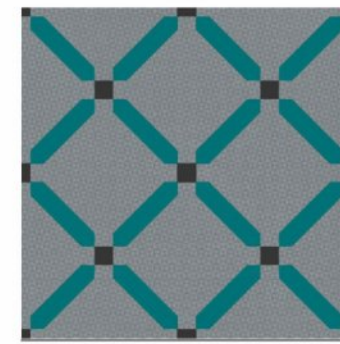
FOR MORE INFORMATION  
CLICK ON QR



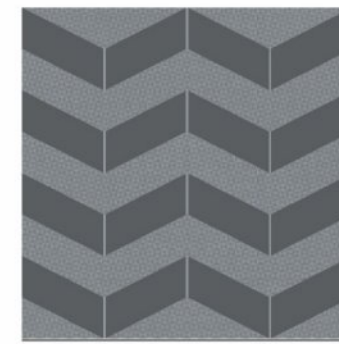
Traverse Black  
FBA 3030001



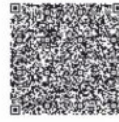
Pacific Pastel  
FBA 3030002



Traverse Teal  
FBA 3030009



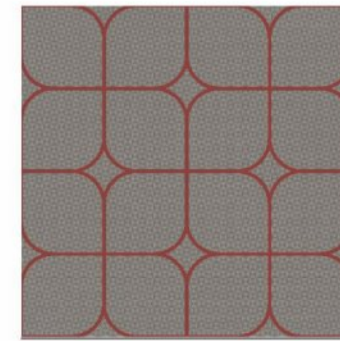
Tide Nero  
FBA 3030010



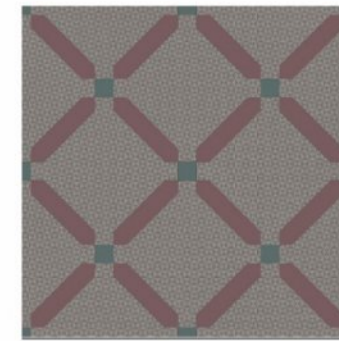
Quad Wine  
FBA 3030003



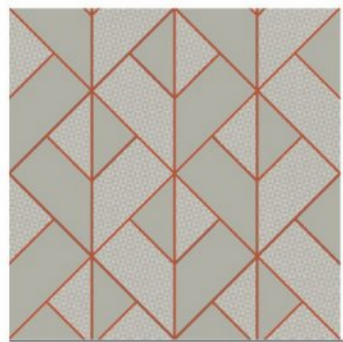
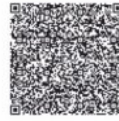
Pacific Mix  
FBA 3030004



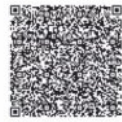
Aries Brick  
FBA 3030011



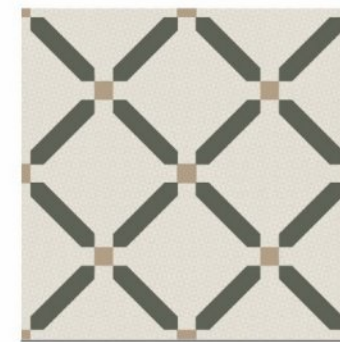
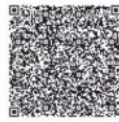
Traverse Wine  
FBA 3030012



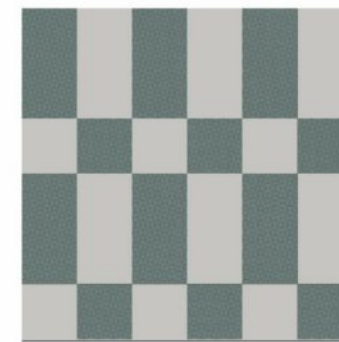
Maze Arancio  
FBA 3030005



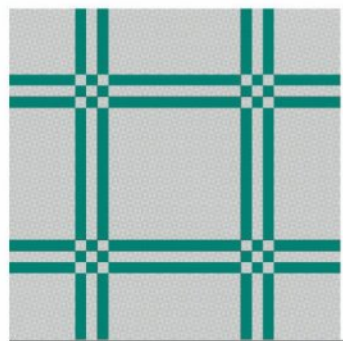
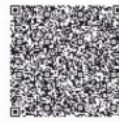
Tide Verde  
FBA 3030006



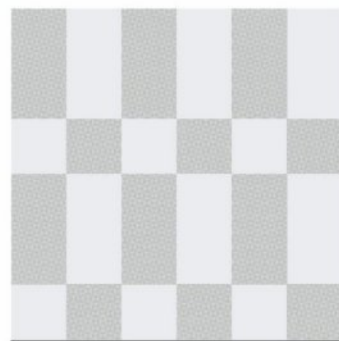
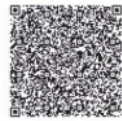
Traverse Fern  
FBA 3030013



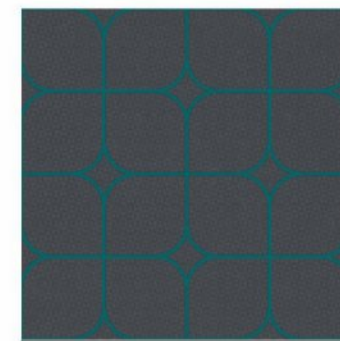
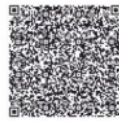
Columns Beige  
FBA 3030014



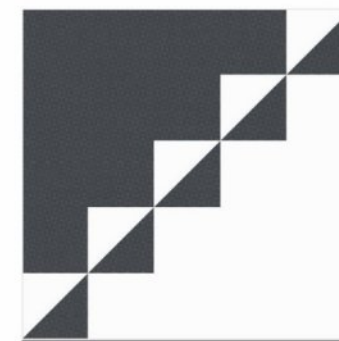
Quad Emerald  
FBA 3030007



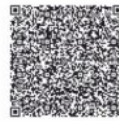
Columns Snow  
FBA 3030008



Aries Black  
FBA 3030015



Tread Mono  
FBA 3030016



# 150x75mm Fabula Chic

FOR MORE INFORMATION  
CLICK ON QR


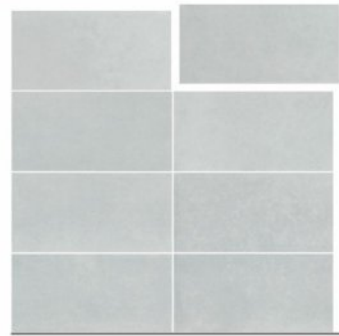
**Dove White**  
FBC 1575001





**Biscoff Beige**  
FBC 1575002



**Autumn Sky**  
FBC 1575003





**Scallop Pink**  
FBC 1575004




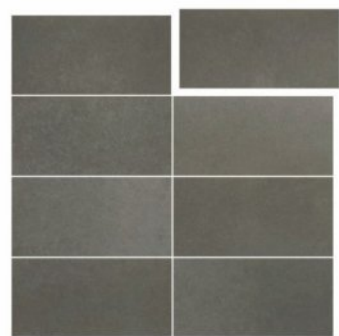
**Ocean Whisper**  
FBC 1575005




**Nickel Grey**  
FBC 1575006




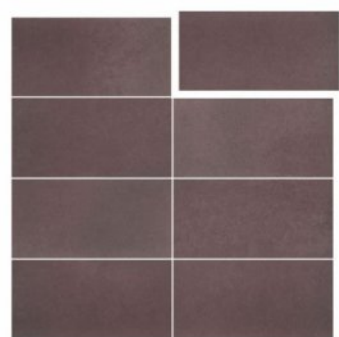
**Café Noir**  
FBC 1575007




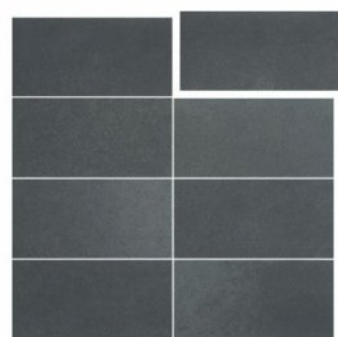
**Chestnut Brown**  
FBC 1575008



**Indigo Wine**  
FBC 1575009



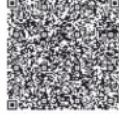

**Slate Grey**  
FBC 1575010




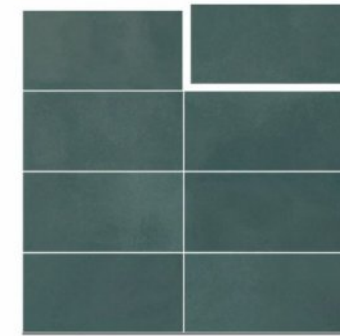
**Forest Eve**  
FBC 1575011




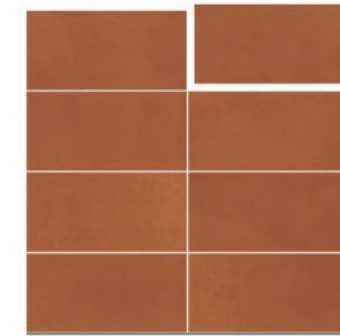
**Starry Night**  
FBC 1575012



**French Fern**  
FBC 1575013




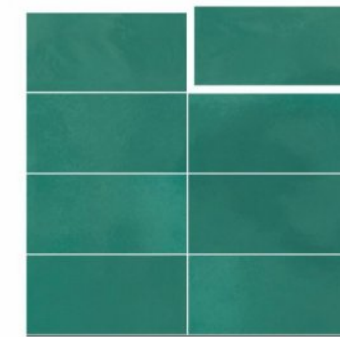
**Brick Brown**  
FBC 1575014



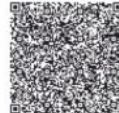

**Rich Prune**  
FBC 1575015




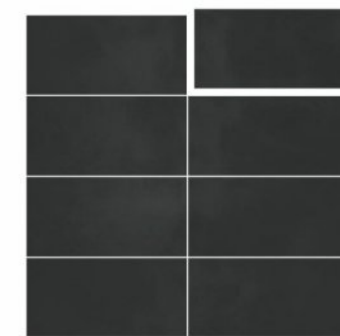
**Eternal Emerald**  
FBC 1575016



**Prussian Teal**  
FBC 1575017



**Burnt Graphite**  
FBC 1575018



# TECHNICAL SPECIFICATION

Dimension & Surface Quality	International Specifications ISO 13006/EN 176 Group & IS 15622 : 2006	Value	Method of Testing
Deviation In Length	±0.6%	±0.2%	ISO 10545 - 2
Deviation In Thickness	±5%	±5%	ISO 10545 - 2
Straightness of Sides	±0.5%	±0.2%	ISO 10545 - 2
Rectangularity	±0.6%	±0.3%	ISO 10545 - 2
**Surface Flatness	±0.5%	±0.3%	ISO 10545 - 2
Surface Quality	A minimum of 95% of the tiles shall be free from visible defects that would impair the appearance of a major area of tiles	Compliant	ISO 10545 - 2
Physical & Thermal Properties			
Water Absorption	<0.5%	<0.2%	ISO 10545 - 3
Mohs Hardness*	>6	Compliant	EN 101
Modulus of Rupture	35 N/mm <sup>2</sup>	>46 N/mm <sup>2</sup>	ISO 10545 - 4
Abrasion Resistance**	<175mm <sup>3</sup>	<144 mm <sup>3</sup>	ISO 10545 - 7
**Skid Resistance (Friction Coefficient)	>0.4	>0.4	ISO 10545 - 17
Breaking Strength	Min 1300 N	> 2000 N	ISO 10545 - 4
Density (g/cc)	>2.0	>2.4	ISO 10545 - 3
Frost Resistance	Required	Compliant	ISO 10545 - 9
Thermal Shock Resistance	10 Cycles Min	Compliant	ISO 10545 - 9
Thermal Expansion	<9 x 10 <sup>-6</sup>	<6 x 10 <sup>-6</sup>	ISO 10545 - 8
Moisture Expansion	Nil	Nil	ISO 10545 - 10
Chemical Properties			
Chemical Resistance	No Damage	No Damage	ISO 10545 - 13
Colour Resistance	No Damage	No Damage	DIN 51094
Stain Resistance	Resistant	Resistant	ISO 10545 - 14

Packing Details									
Type		Dimensions in MM	Thickness	Pieces/Box	Area Converage/Box	Kg/Box	Boxes/Pallet	SQM/Pallet	Kgs/Pallet*
Fabula	Master Box	1200x600	9mm	02	1.44 sq.mtr	27Kg (Appx.)	64	92.16	1746
Fabula Art	Master Box	300x300	9mm	10	0.9 sq.mtr	18Kg (Appx.)	72	64.8	1296
Fabula Chic	Mini Box	150x75	9mm	08	0.09 sq.mtr	1.7Kg (Appx.)	-	-	-
	Master Box	150x75	9mm	80	0.9 sq.mtr	17Kg (Appx.)	48	43.2	912

\*Gross Weight

### Note:

It is strongly recommended to use spacers. Leave min 2MM gap between adjacent tiles to allow possible expansion as well as to enhance aesthetics of laying.

### Disclaimer :

Ceramic Fashion Studio reserves the rights to delete & amend either totally or partially, any of the colors, shapes, sizes, references and other technical specifications or aesthetic appearance of product/s contained in this catalogue at any time without any prior notice. The colors shown of products in this catalogue are purely illustrative and limited to printing process. Please refer actual product before final selection. The detail of sizes and color references should be verified for typographical errors.



SHREE AMBICA DECOPRINTS PVT. LTD. 766, 772-Rakanpur, Sola Santej Road, Ta. Kalol-382 721. (North Gujarat). India.  
Email: [info@ceramicfashionstudio.com](mailto:info@ceramicfashionstudio.com) Ph: +91 85114 14104

[www.ceramicfashionstudio.com](http://www.ceramicfashionstudio.com)

