

AN ISO 9001:2015 CERTIFIED COMPANY

CERAM FASH STUD C[®] ON O



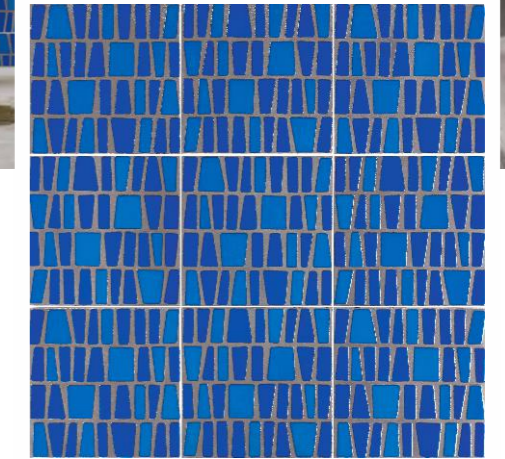
curio[®]
version 2.0

200mm x 200mm



CCU 2020001

KRETA MOKA



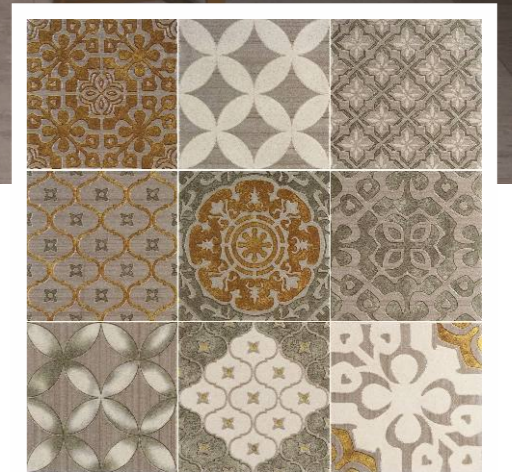
CCU 2020011

SPECTRA BLU



CCU 2020002

KRETA AZUL



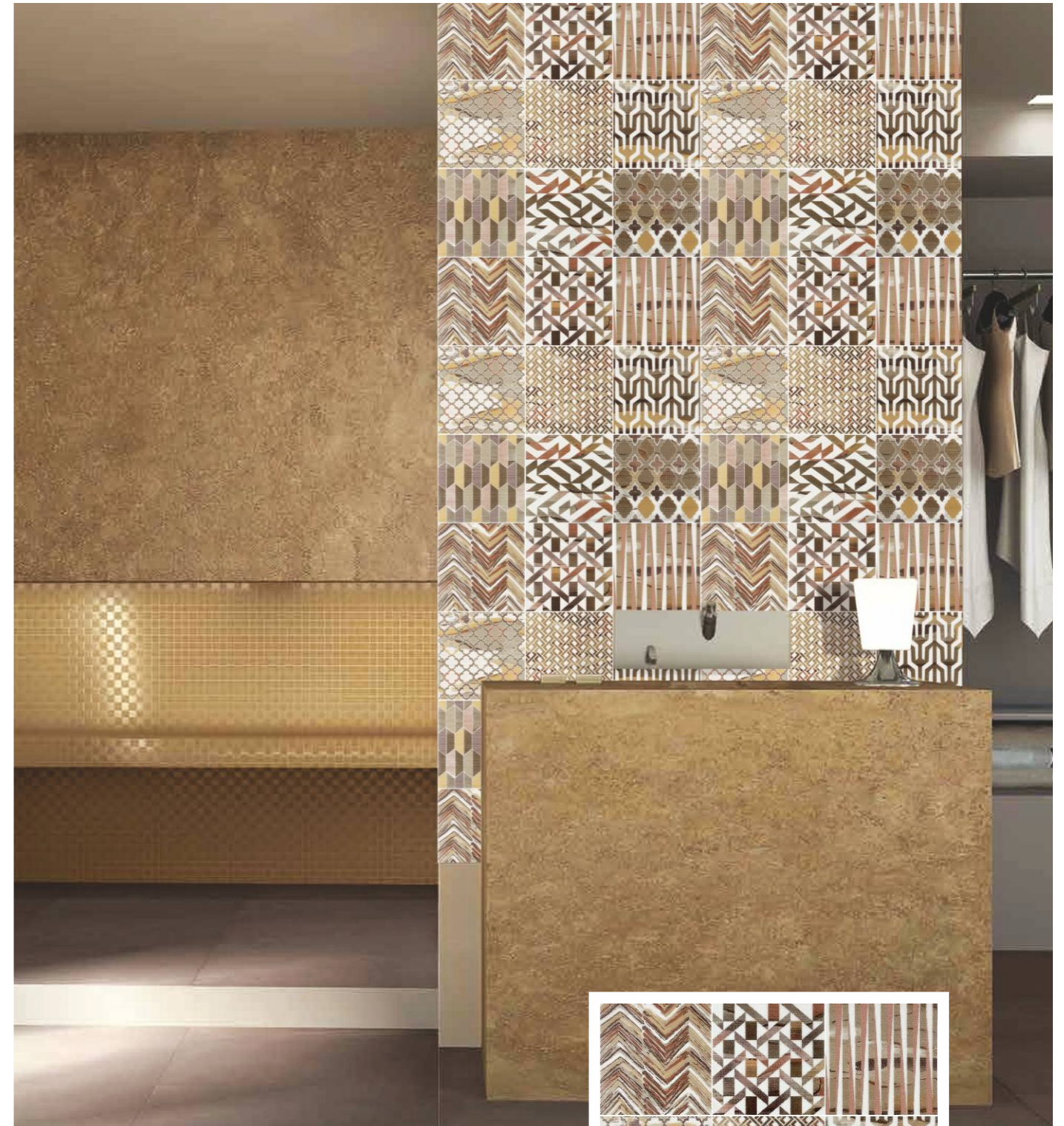
CCU 2020007

IMPERIO BEIGE



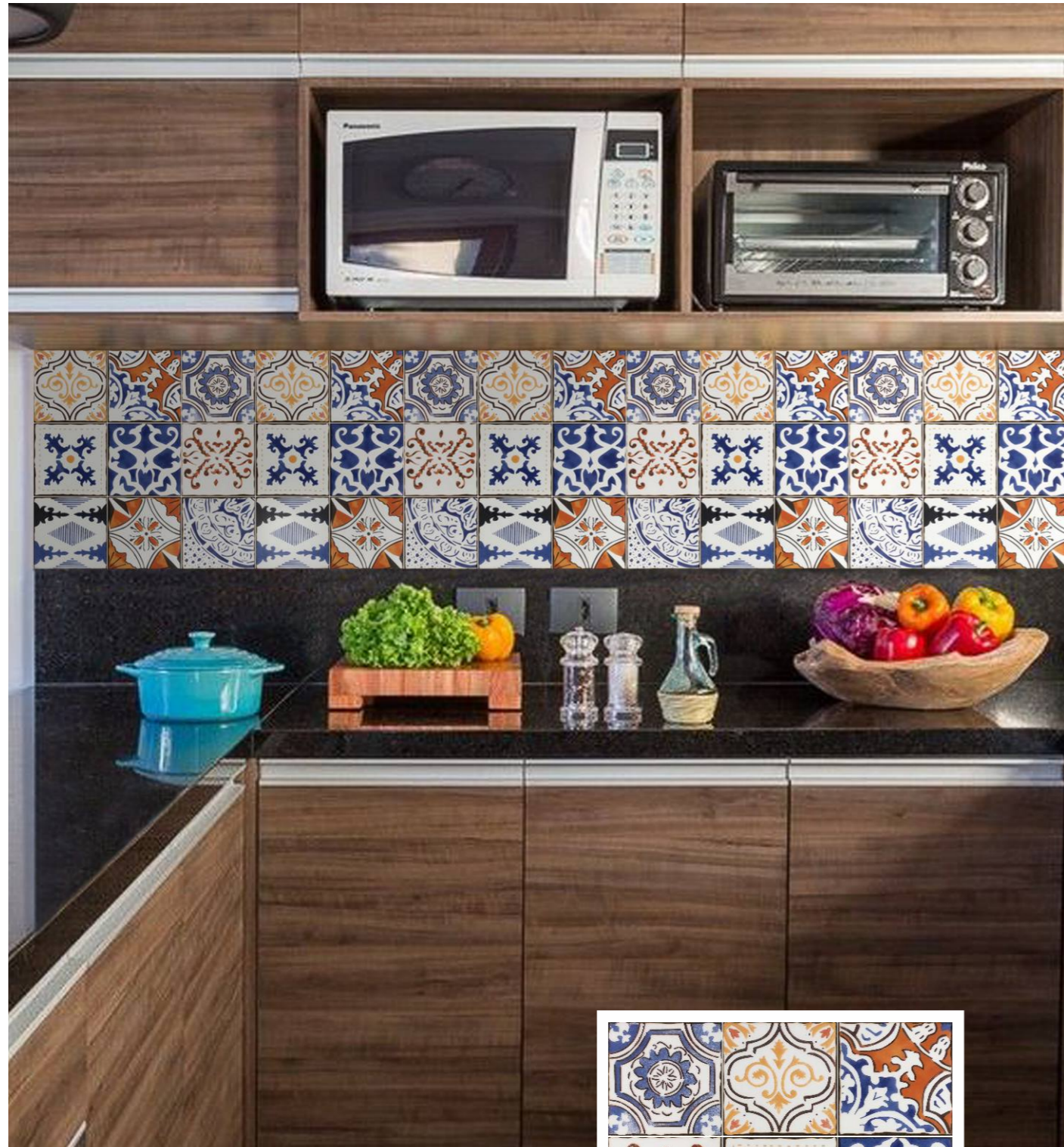
CCU 2020020

VINTAGE MIX



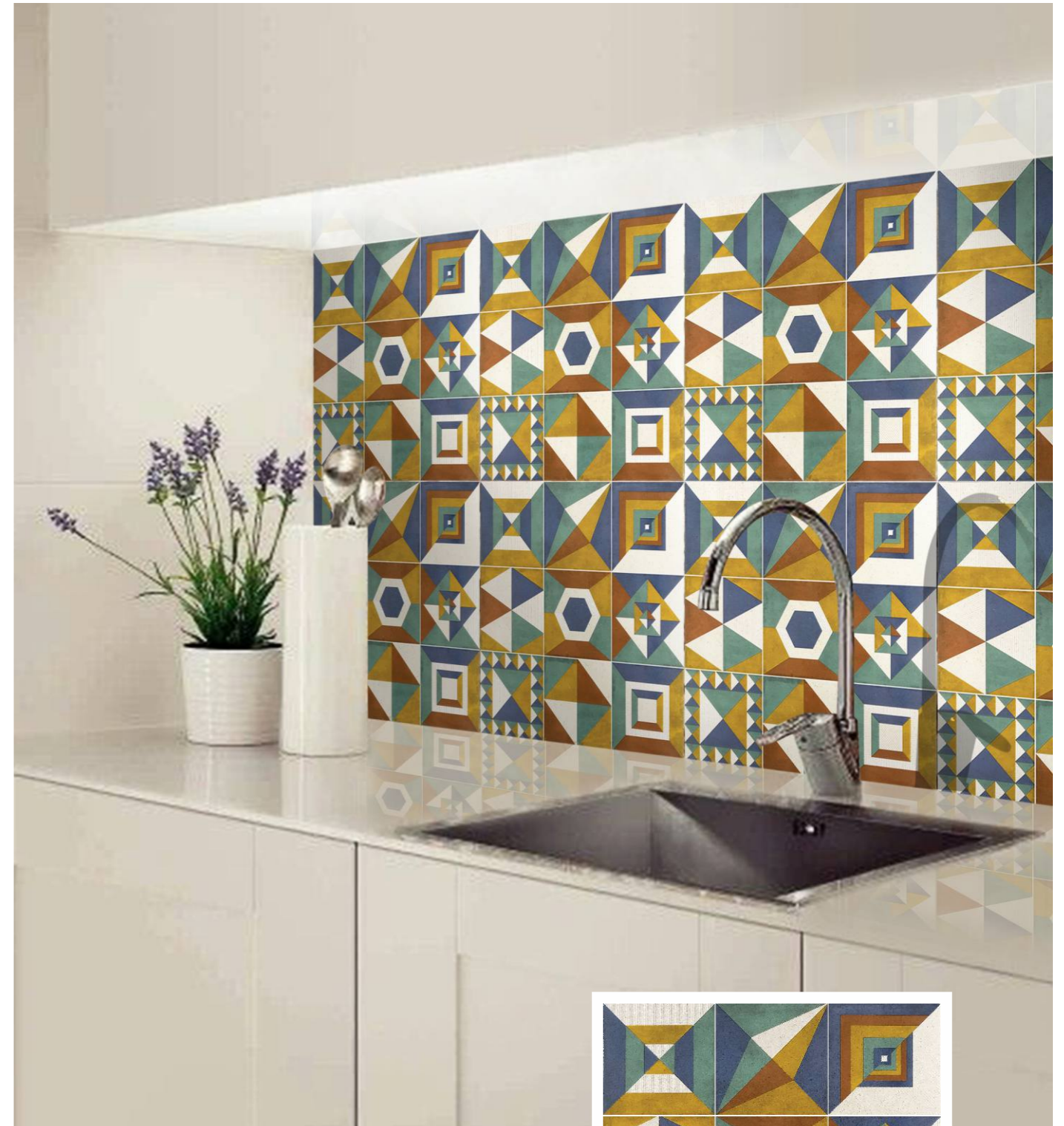
CCU 2020015

GRAFIQUE BEIGE



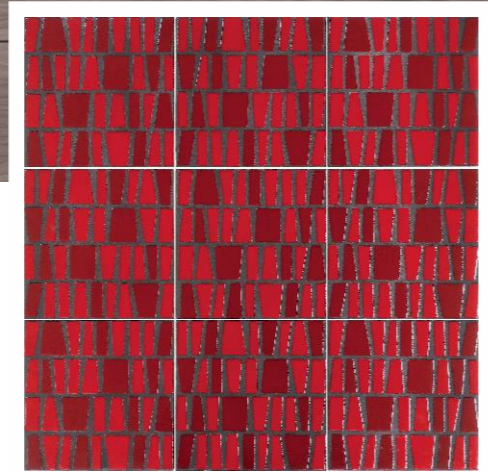
CCU 2020019

AVANT MIX

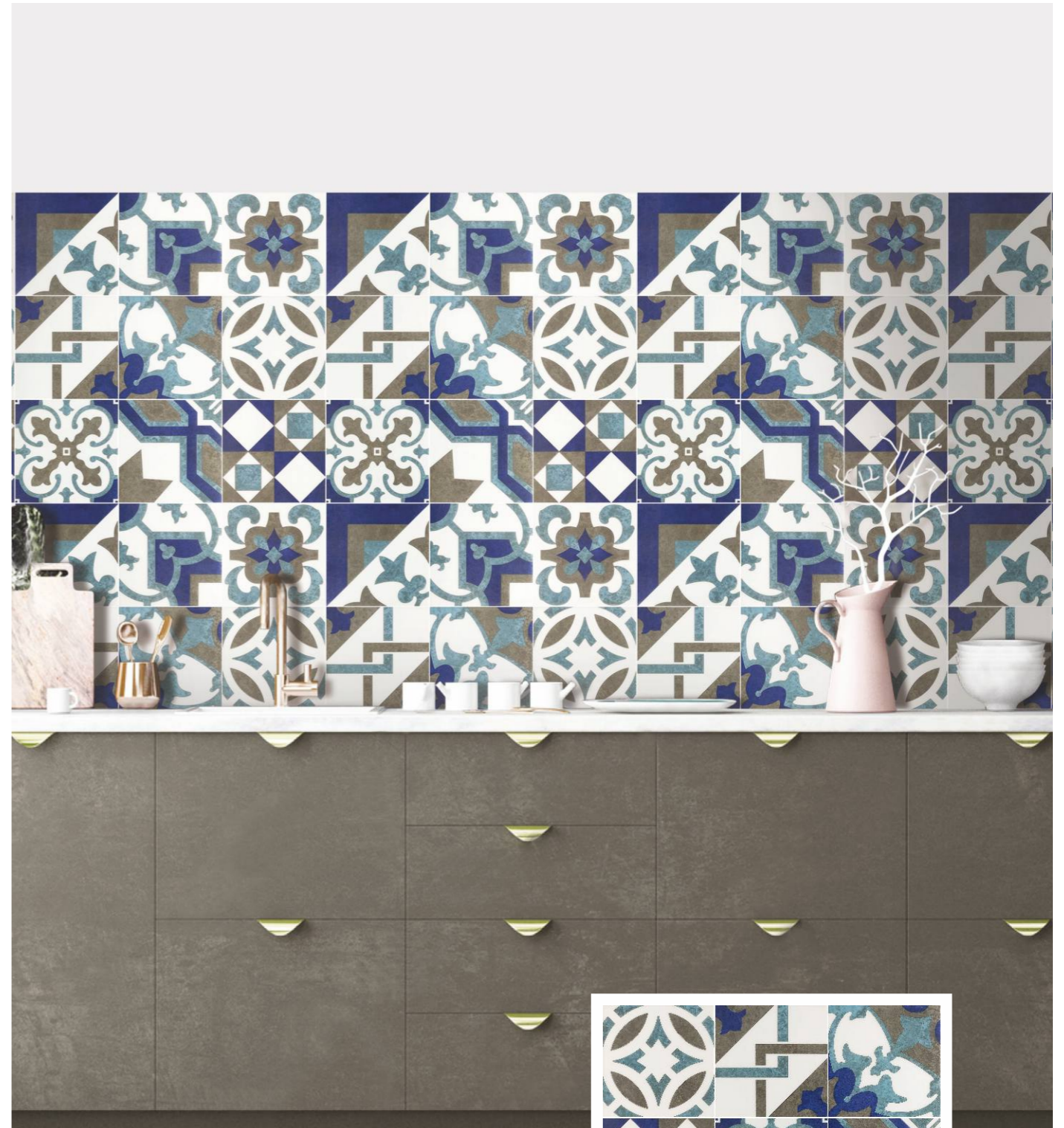


CCU 2020018

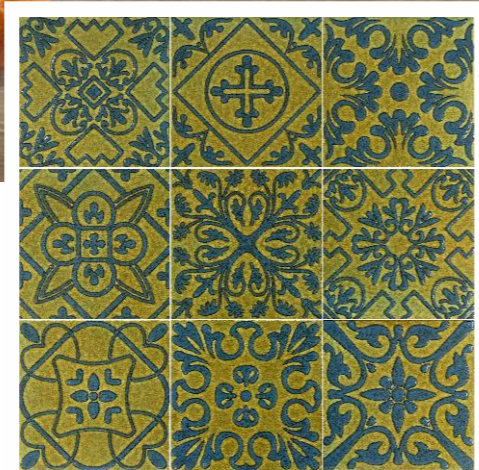
FORME MULTI



CCU 2020010 SPECTRA ROSSO



CCU 2020022 MILANO AZUL



CCU 2020009

MODELLO VERDE



CCU 2020012

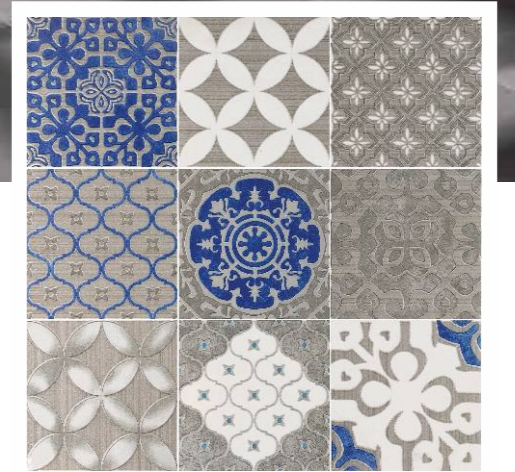
ATICA SAND



CCU 2020013

ATICA GREY

curio[®]
version 2.0



CCU 2020008

IMPERIO GRIGIO

CERAMIC[®]
FASHION
STUDIO



CCU 2020021

MILANO ARANCIO

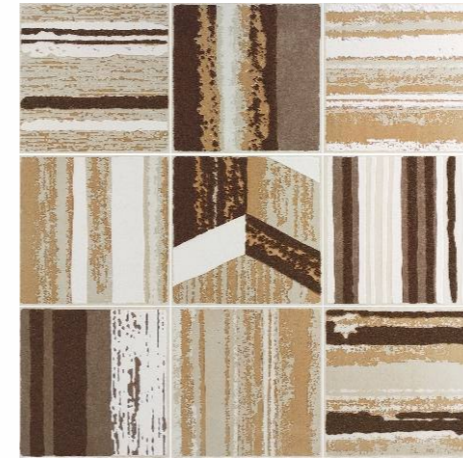


CCU 2020016

GRAFIQUE GREY



CCU 2020017 FORME GREIGE



CCU 2020001 KRETA MOKA



CCU 2020002 KRETA AZUL



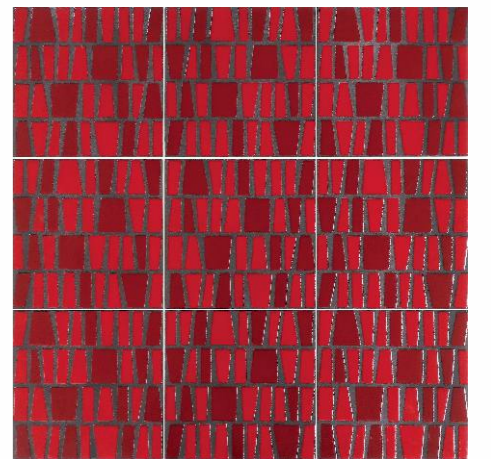
CCU 2020007 IMPERIO BEIGE



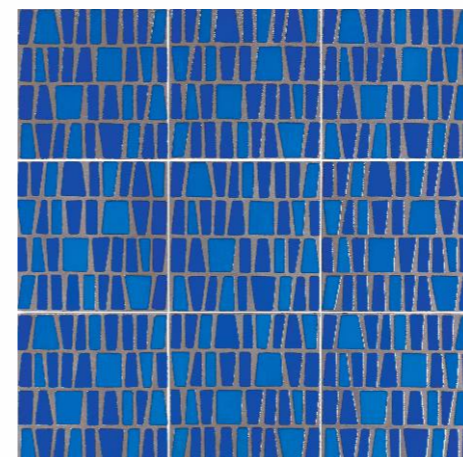
CCU 2020008 IMPERIO GRIGIO



CCU 2020009 MODELLO VERDE



CCU 2020010 SPECTRA ROSSO



CCU 2020011 SPECTRA BLU



CCU 2020012 ATICA SAND



CCU 2020013 ATICA GREY



CCU 2020015



CCU 2020016



CCU 2020017

GRAFIQUE BEIGE

GRAFIQUE GREY

FORME GREIGE



CCU 2020018



CCU 2020019



CCU 2020020

FORME MULTI

AVANT MIX

VINTAGE MIX



CCU 2020021



CCU 2020022

MILANO ARANCIO

MILANO AZUL

TECHNICAL SPECIFICATION

DIMENSION & SURFACE QUALITY	International Specifications ISO 13006/EN 176 Group & IS 15622 : 2006	VALUE	METHOD OF TESTING
▬ Deviation In Length	±0.6%	±0.2%	ISO 10545 - 2
▬ Deviation In Thickness	±5%	±5%	ISO 10545 - 2
▬ Straightness Of Sides	±0.5%	±0.2%	ISO 10545 - 2
▬ Rectangularity	±0.6%	±0.3%	ISO 10545 - 2
↔ **Surface Flatness	±0.5%	±0.3%	ISO 10545 - 2
⚡ Surface Quality	A minimum of 95% of the tiles shall be free from visible defects that would impair the appearance of a major area of tiles	Compliant	ISO 10545 - 2
PHYSICAL & THERMAL PROPERTIES			
☂ Water Absorption	<0.5%	>0.2%	ISO 10545 - 3
🔪 Mohs Hardness*	>6	Compliant	EN 101
⚡ Modulus of Rupture	35 N/mm ²	>46 N/mm ²	ISO 10545 - 4
🔪 Abrasion Resistance**	<175 mm ³	<144 mm ³	ISO 10545 - 7
👣 **Skid Resistance (Friction Coefficient)	>0.4	>0.4	ISO 10545 - 17
🔪 Breaking Strength	Min 1300 N	> 2000 N	ISO 10545 - 4
📦 Density (g/cc)	>2.0	>2.4	ISO 10545 - 3
❄ Frost Resistance	Required	Compliant	ISO 10545 - 9
🔥 Thermal Shock Resistance	10 Cycles Min	Compliant	ISO 10545 - 9
↔ Thermal Expansion	<9 x 10 ⁻⁶	<6 x 10 ⁻⁶	ISO 10545 - 8
💧 Moisture Expansion	Nil	Nil	ISO 10545 - 10
CHEMICAL PROPERTIES			
🧪 Chemical Resistance	No Damage	No Damage	ISO 10545 - 13
☀ Colour Resistance	No Damage	No Damage	DIN 51094
👤 Stain Resistance	Resistant	Resistant	ISO 10545 - 14

PACKING DETAILS					
	Dimensions in MM	Thickness	Pieces/Box	Area Coverage/Box	Weight/Box
Mini Box	200 x 200mm	9 mm	3	0.12 sq.mtr	2.7 Kg (App.)
Master Box	200 x 200mm	9 mm	18	0.72 sq.mtr	16 Kg (App.)

Note: It is strongly recommended to use spacers. Leave min 2MM gap between adjacent tiles to allow possible expansion as well as to enhance aesthetics of laying.

DISCLAIMER: Ceramic Fashion Studio reserves the rights to delete & amend either totally or partially, any of the colors, shapes, sizes, references and other technical specifications or aesthetic appearance of product/s contained in this catalogue at any time without any prior notice. The colors shown of products in this catalogue are purely illustrative and limited to printing process. Please refer actual product before final selection. The detail of sizes and color references should be verified for typographical errors.

SHREE AMBICA DECOPRINTS PVT. LTD. 766, 772-Rakanpur, Sola Santej Road, Ta. Kalol-382 721. (North Gujarat). India.

Email: sales@ceramicfashionstudio.com | Ph: +91 2764 286961-2-3

CERAMIC®
FASHION
STUDIO

www.ceramicfashionstudio.com

